

# XL FOLDING GOOSENECK



XL 100 Folding Gooseneck (Mechanical)

## YOUR SOLUTIONS-BASED HAULING PARTNER



Low incline ramp

### REVOLUTIONARY DESIGN

The XL Folding Gooseneck handles your heaviest hauling challenges. The **low incline ramp** makes it easy and safe to load and transport pavers, scrapers and other heavy equipment. The **neck adjusts to uneven terrain** without the use of blocks so you can load and unload almost anywhere.



XL 100 FG

### XL FG: OIL FIELD OPTIONS

XL Folding Gooseneck can be fully equipped for use in the oil field. With rollers including **tail rolls**, **neck rolls**, **pop-up rollers** and **pick up eyes**, the XL Folding Goosenecks easily accommodate your oil and gas hauling needs.



XL 120 FGE: Oil and Gas spec

### XL FGE: EXTENDABLE OPTION

XL Folding Gooseneck Extendable features the **Patented XL Extend-A-Trac**, which allows for extending and retracting the trailer without hooking and unhooking air and electrical lines. 6" greaseable rollers incorporate oil impregnated bronze bushings to make extending easy.

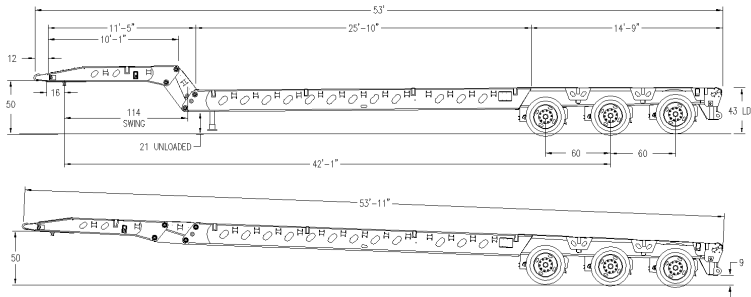
### BUILT WITH YOU IN MIND

- Mechanical neck
- 11' 5" gooseneck length
- 25' 10" main deck
- 10" heavy duty live roll
- Low incline ramp
- 43" rear deck height
- 16" removable king pin settings
- 53' overall length
- 114" swing clearance
- All XL Specialized Trailers' products go through the new, premium paint process. XL paint includes a **full 1 year warranty**.
- Always striving to surpass market standards, all XL Specialized Trailers' products feature a **5 year structural warranty**.

### FIND YOUR SPECIALIZED SOLUTION TODAY

visit [xlspecializedtrailer.com](http://xlspecializedtrailer.com)

# XL FOLDING GOOSENECK



## XL 120 OILFIELD FG

**CAPACITY: 120,000 LB OVERALL**  
**CONCENTRATED: 120,000 LB IN 10'**  
**OAL: 53' | OAW: 102"**

## SPECS

### GOOSENECK

2 POSITION TAPERED FULL-WIDTH  
MECHANICAL SCISSORNECK  
12' 5" LONG  
16" REMOVABLE KING PIN SETTING  
114" SWING CLEARANCE  
50" 5TH WHEEL HEIGHTS  
SWING UP STYLE LANDING GEAR  
5" ROLLER AT BACK OF NECK  
TAIL CHAIN HOOK IN 5TH WHEEL  
(2) PAIR OF TIE LOOPS PER SIDE  
1¾" APITONG RAISED  
ROUND TUBE AT TOP OF BACK WALL OF  
5TH WHEEL BOX  
TOOL BOX BEHIND KING PIN

### SUSPENSION

25,000 LB AIR RIDE  
LIMIT CHAINS  
AUTOMATIC SELF ADJUSTING  
SLACK ADJUSTERS

### REAR DECK

14' 1" LONG  
43" LOADED DECK HEIGHT  
(4) TIE LOOPS, ONE ON EACH BOLSTER  
1½" PIN POCKETS  
10" HEAVY DUTY LIVE REAR ROLL

### MAIN DECK

SINGLE DROP  
25' 10" LONG  
43" LOADED DECK HEIGHT  
8" GROUND CLEARANCE  
1¾" APITONG DECKING RAISED  
8" JR. I-BEAM ON 20" CENTERS  
(13) TIE LOOPS PER SIDE ON 20"  
CENTERS  
(4) 1½" I.D. PIN POCKETS PER SIDE  
AIR LIFT CENTER LIVE ROLLER

### AXLES

(3) 30,000 NOMINAL, 77½" TRACKING  
60" AXLE SPACING  
SPRING BRAKES ON 2 AXLES  
16½" X 7" BRAKES  
HUB PILOT, OUTBOARD DRUMS

### WHEELS AND TIRES

8.25 X 22.5 STEEL RIMS  
255 / 70R / 22.5 TIRES  
STEEL COVERED WHEELS  
AIR LIFT ON LAST AXLE

### LIGHTING

D.O.T. APPROVED 12V SEALED  
GROTE HARNESS  
RUBBER MOUNTED LED LIGHTS  
(1) MID-TURN SIGNAL PER SIDE  
(2) CLEARANCE LIGHT PER SIDE  
7 POLE ELECTRICAL SOCKET  
3 TAIL LIGHT PACKAGE WITH  
ALUMINUM COVER  
4" AMBER STROBE WITH SWITCH  
4" PULLOUT LIGHTS

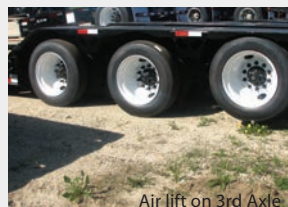
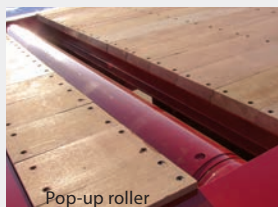
### NEW INDUSTRY-LEADING PAINT PROCESS

1 YEAR WARRANTY  
BLACK, IH RED, OR NEW CAT YELLOW  
AIR & ELECTRIC DONE AFTER

### AVAILABLE MODELS

XL 100 FG  
XL 110 FG  
XL 120 FG  
AVAILABLE WITH 3, 4 OR 5 AXLES  
ALSO AVAILABLE AS AN EXTENDABLE,  
THE XL FGE

## OPTIONS



### POPULAR OPTIONS

Single drop conversion  
Oil field spec with rollers  
Winch in wheel area  
Multiple king pin settings  
Various outriggers/D-rings

Air lift on 3rd axle  
Prepped for Flip Axles,  
Boosters and Power Boosters  
Many more available